

THE NATION'S CAPITAL *around the corner*



Windham Creek
APARTMENTS

WINDHAM CREEK APARTMENTS

Apartment living should be everything you want it to be. Quality and location is what you'll find at Windham Creek Apartments. Conveniently located minutes from I-495/95 and downtown Washington, DC, Windham Creek Apartments offers newly modernized apartment homes in a serene setting. Situated near the U.S. Census Bureau, Andrews Air Force Base, Suitland Metro station, Suitland Parkway and shopping, Windham Creek Apartments has everything you need right at your fingertips.

Windham Creek Apartments offers one-, two- and three-bedroom apartment homes featuring spacious floor plans, fully-equipped kitchens, wall-to-wall carpeting and individually controlled heating and air conditioning.

On-site amenities include ample free parking, laundry facilities in each building and a large playground. Our professional management staff is dedicated to providing the highest level of resident services including highly-responsive maintenance.

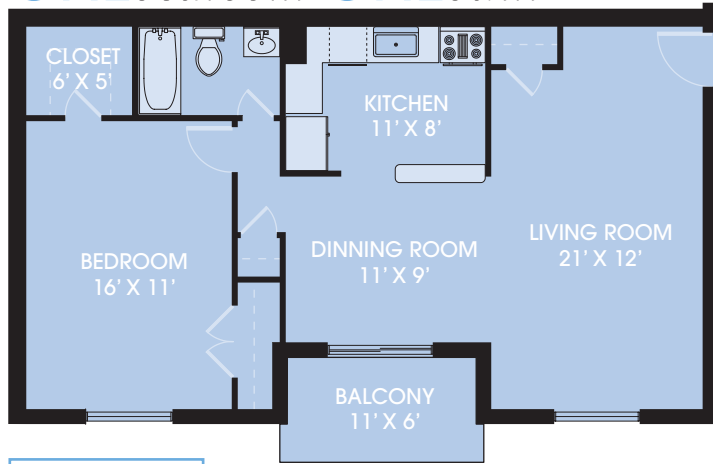
APARTMENT *features*

- One-, two- and three-bedroom apartment homes
- Spacious floor plans
- Separate dining areas
- Huge walk-in closets
- Wall-to-wall carpeting
- Mini-blinds on all windows
- Fully-equipped kitchens with dishwashers
- Individually controlled heating and air conditioning
- Cable ready
- Balcony or patio

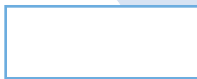
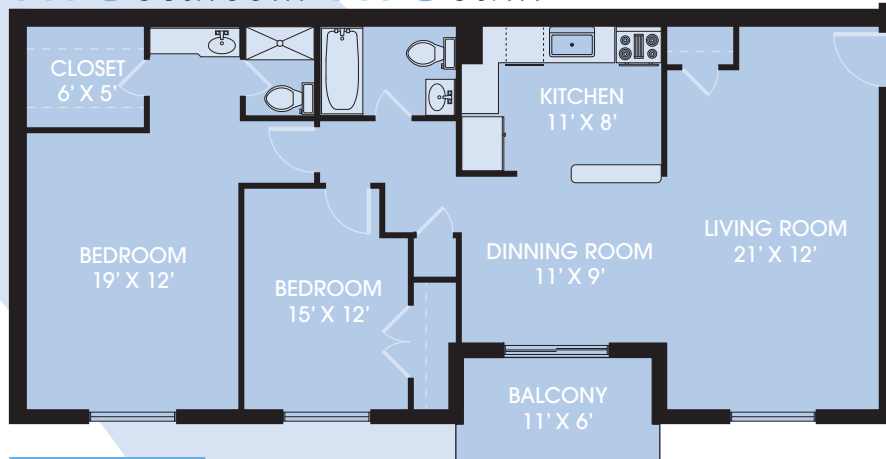
COMMUNITY *features*

- Professionally landscaped and maintained grounds and common areas
- Peaceful surroundings
- Easy access to major thoroughfares
- Ample parking
- Outdoor playground
- Laundry facilities in each building
- Walking distance to Metro rail
- Metro bus stop at the entrance
- 24-hour emergency maintenance

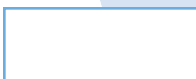
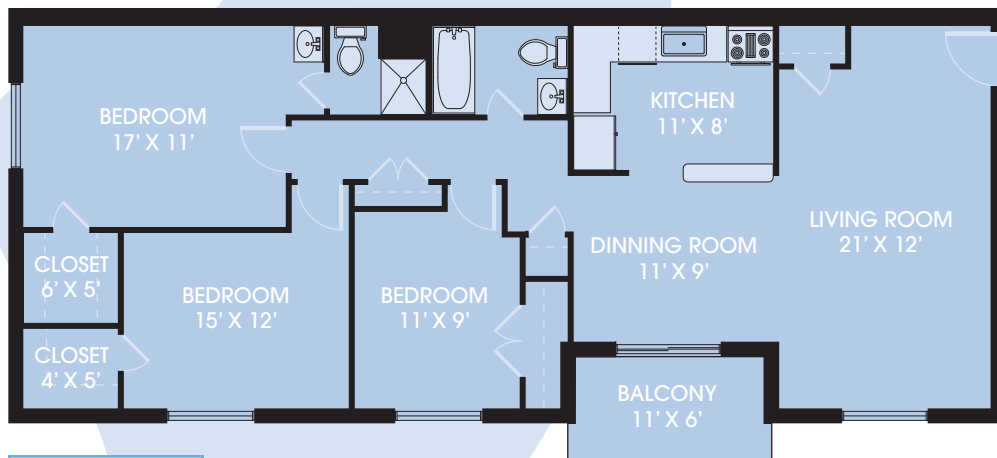
ONE bedroom ONE bath

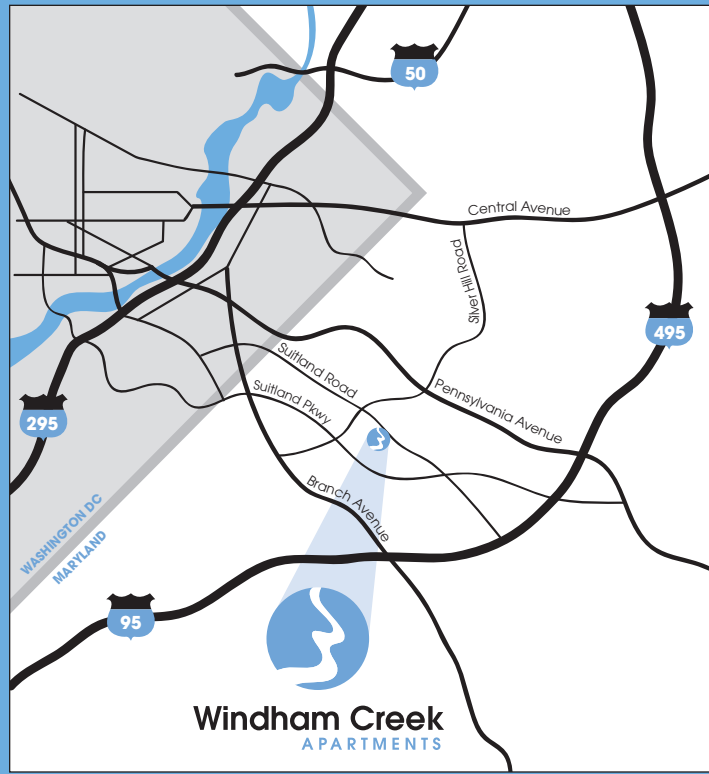


TWO bedroom TWO bath



THREE bedroom TWO bath





Windham Creek
APARTMENTS

5123 Suitland Road
Suitland, Maryland 20746
Phone | 301.568.6400
Fax | 301.568.1289
E-mail | windhamcreek@equitymgmt.com

DIRECTIONS

From I-495/95, take exit 11-B (Pennsylvania Avenue) toward Washington DC. Go approximately three miles and turn left on Silver Hill Road. Proceed to Suitland Road and turn left. Windham Creek Apartments is located one-half mile on the right. Please follow the signs to the leasing center.

PROFESSIONALLY MANAGED BY



EQUITY MANAGEMENT, INC.

www.equitymgmt.com



We pledge to the letter and spirit of U.S. policy for the achievement of equal housing opportunity throughout the nation. We encourage and support an affirmative advertising and marketing program in which there are no barriers to obtaining housing because of race, color, religion, sex, handicap, familial status or national origin.